

SMART FACTORY

Foil Managing System

VONSQUARE

New
Blue tension



ON SQUARE

www.vonsquare.com

CABINET



Specifications

- Size : 1140(W) * 770(L) * 2000(H)
- Weight : 120kg
- Storage : 300EA(slot)
- Exterior : Stainless
- Interior : Chemically resistant material safe for washing liquid, anti-static

Overview

- Perfectly anti-static and earthquake-resistant
- 3-tier storage for efficient space use
- Can store both 650, 736 sizes
- LED display for checking slot location
- Real-time buzzer alert for normal shipment, defective shipment
- Wheels movable and fixable for easy transportation
- Beautiful exterior for adding aesthetics to the space (blue opaque curved glass)

VONSQUARE II



A Type (650x550)



Standard air inlet



B Type (736x736)



Tension-adjustable air inlet

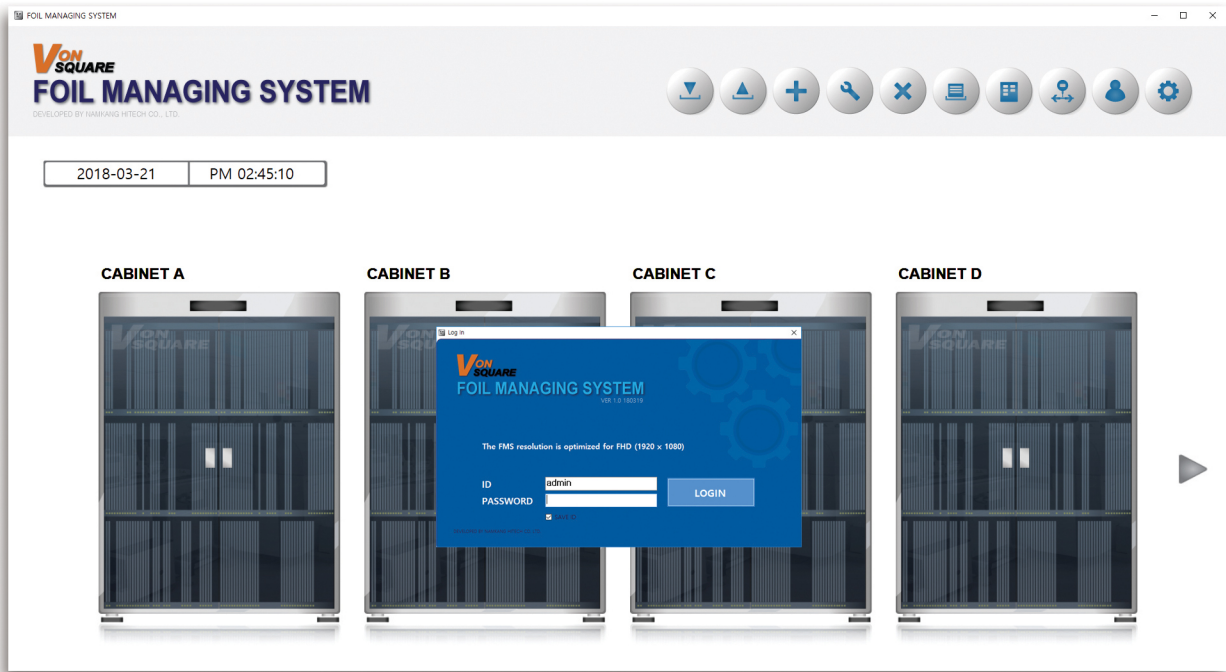
VONSQUARE II Printing Area

- A Type (650x550)
 - Horizontal inlet: 550x380
 - Vertical inlet: 450x480
- B Type (736x736)
 - Horizontal inlet: 635x380
 - Vertical inlet: 450x565

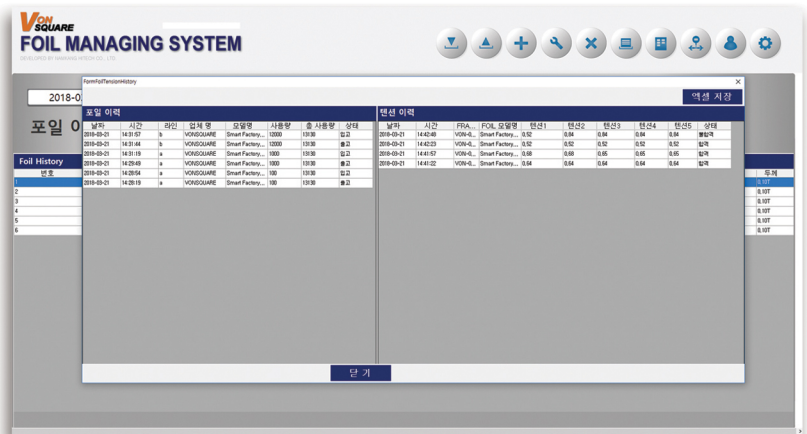
Overview

- Cylindrical for trustworthy SUS
- Tension adjustable with air pressure; high-tension option available
- Sliding method to exchange SUS within facility
- Provides wider printing area than original metal mask
- ※ **Equal level of tension can be set for every production input**
 - Tension adjustable for each model
 - Tension adjustable for specific usage time and frequency

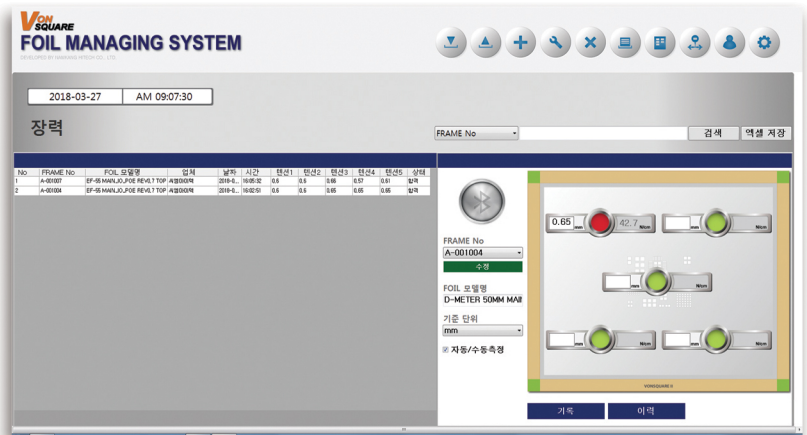
FMS(Software)



Main screen



History management



Tension measurement

New



Blue Tension

- Supports Bluetooth to prevent manual errors
- Manual and automatic options available
- History management for each frame and model

FMS Recommendations

- Operating system : 64bit – Win7, Win8, Win10
- Resolution : 1920 x 1080 (FHD)
- Memory : 4GB or above
- Accessories
 - Scanner : Data logic, Honeywell 2D corded/wireless
 - Tension gauge: Von Square Blue Tension

Foil Managing System_1.0.0_Beta_22

- Better sync abilities with cabinet
- Improved UI for more convenient use
- Can be synced with Von Square Blue Tension
- Can display and store production history for each model
- Supports 3 languages (Korean, Mandarin, English)
- ※ Can support additional languages

Storage Comparison and Tension Adjustments

Space Use
**6Times
Larger**

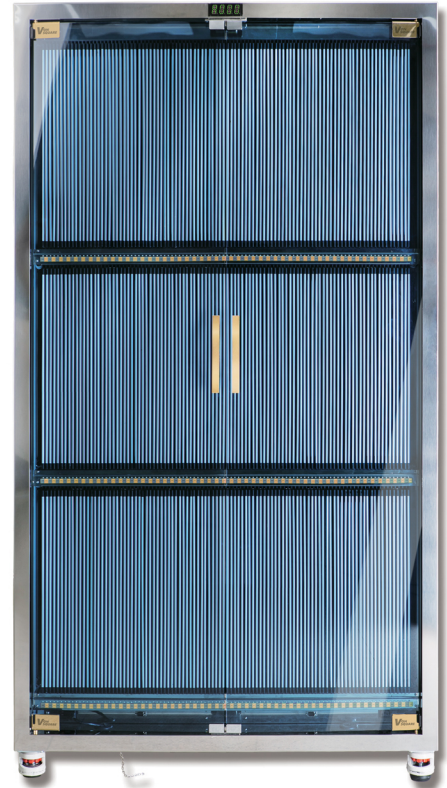


Metal mask 30mm vs Foil 5mm



100sheets

VS

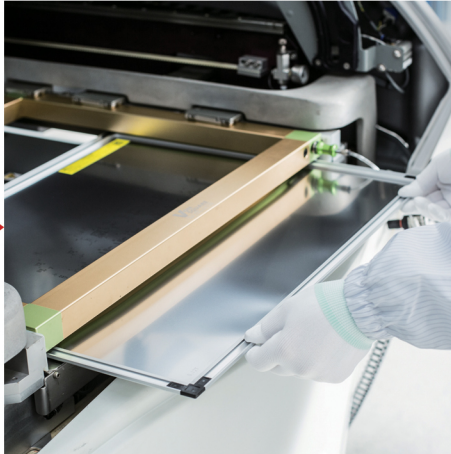


300sheets

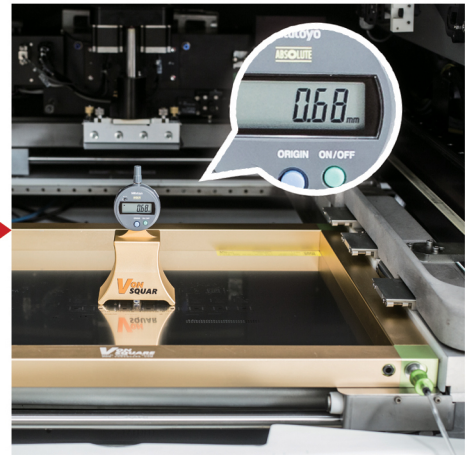
Installation Step 1



Installation Step 2



Default tension



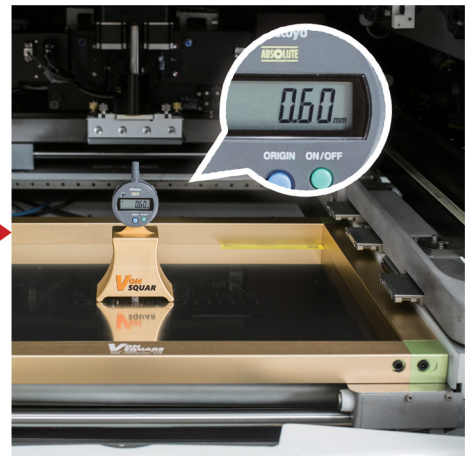
Pressurization step 1



Pressurization step 2



Pressurized tension



*We turn your limited space
into the maximum storage possible.*

